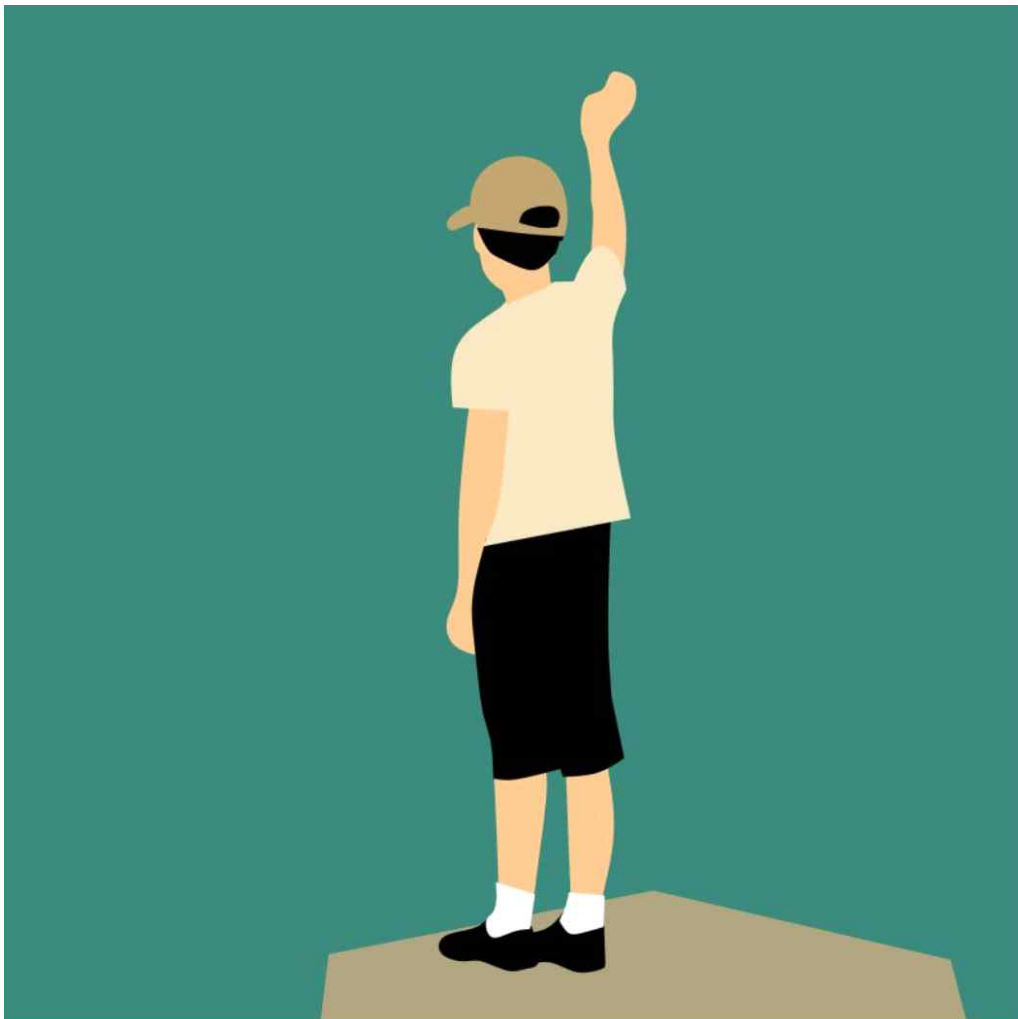


[수능영어 파이널]

# 수능 어법 찍기 특강

<13개의 출제 예상 point와 6개의 기출 적용>



I worked my whole life just to get high, just to realize

'Everything I need is on the ground'.

-로제 'on the ground'



## **어법 출제 예상 point**

**#1. 형용사와 부사**

**#2. 관계대명사와 관계부사**

**#3. 목적어 자리에 있는 it/them**

**#4. ,which / ,all of which**

**#5. 병렬 구조**

**#6. -ing에 밑줄**

**#7. 수일치**

**#8. to부정사**

**#9. as**

**#10. 5형식의 수동태**

**#11. 타동사의 능동태/수동태**

**#12. 대동사**

**#13. that과 what**

## 22.06.고3

29. 다음 글의 밑줄 친 부분 중, 어법상 틀린 것은?

Most historians of science point to the need for a reliable calendar to regulate agricultural activity as the motivation for learning about what we now call astronomy, the study of stars and planets. Early astronomy provided information about when to plant crops and gave humans ① their first formal method of recording the passage of time. Stonehenge, the 4,000-year-old ring of stones in southern Britain, ② is perhaps the best-known monument to the discovery of regularity and predictability in the world we inhabit. The great markers of Stonehenge point to the spots on the horizon ③ where the sun rises at the solstices and equinoxes — the dates we still use to mark the beginnings of the seasons. The stones may even have ④ been used to predict eclipses. The existence of Stonehenge, built by people without writing, bears silent testimony both to the regularity of nature and to the ability of the human mind to see behind immediate appearances and ⑤ discovers deeper meanings in events.

\* monument: 기념비    \*\* eclipse: (해·달의) 식(蝕)

\*\*\* testimony: 증언